

TIRILTOPPEN

LEILIGHETER **TYPE D**

GJELDER HUS NR: 32 - 38
 44 - 56
 70 - 72
 74 - 78
 84 - 92
 94 - 104
 110 - 114
 122 - 128
 130 - 138
 140 - 148
 150 - 152
 158 - 162
 164 - 168

TEGNINGENE VISER FORSLAG TIL UTVIDELSE
MED ARKER PÅ BEGGE LANGSIDER

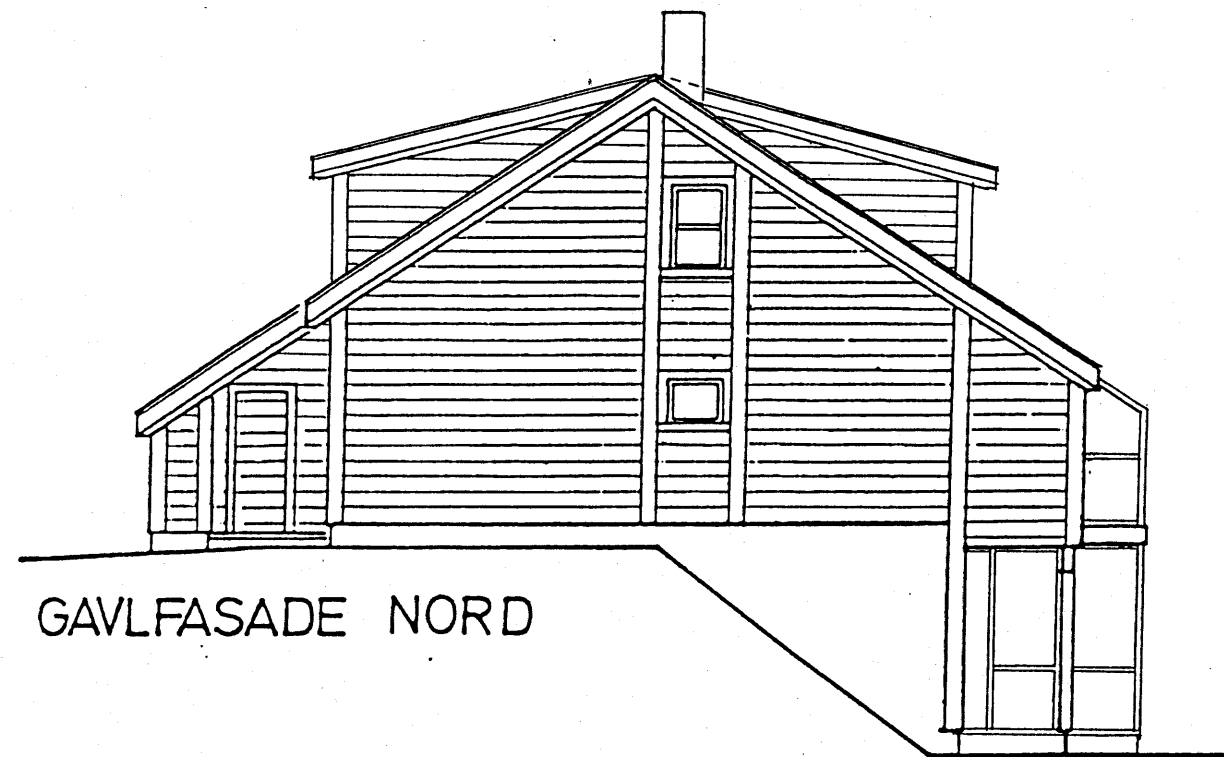
TEGNINGENE VISER OGSÅ FORSLAG TIL
INNGLASSING AV BALKONG OG TERRASSE

PLATOU

Platou Arkitekter AS
Arkitekter MNAL
Rådhusgaten 23
Postboks 361 Sentrum
0102 OSLO
Telefon 22 41 48 50
Telefax 22 41 68 87

Dato: 10.05.99

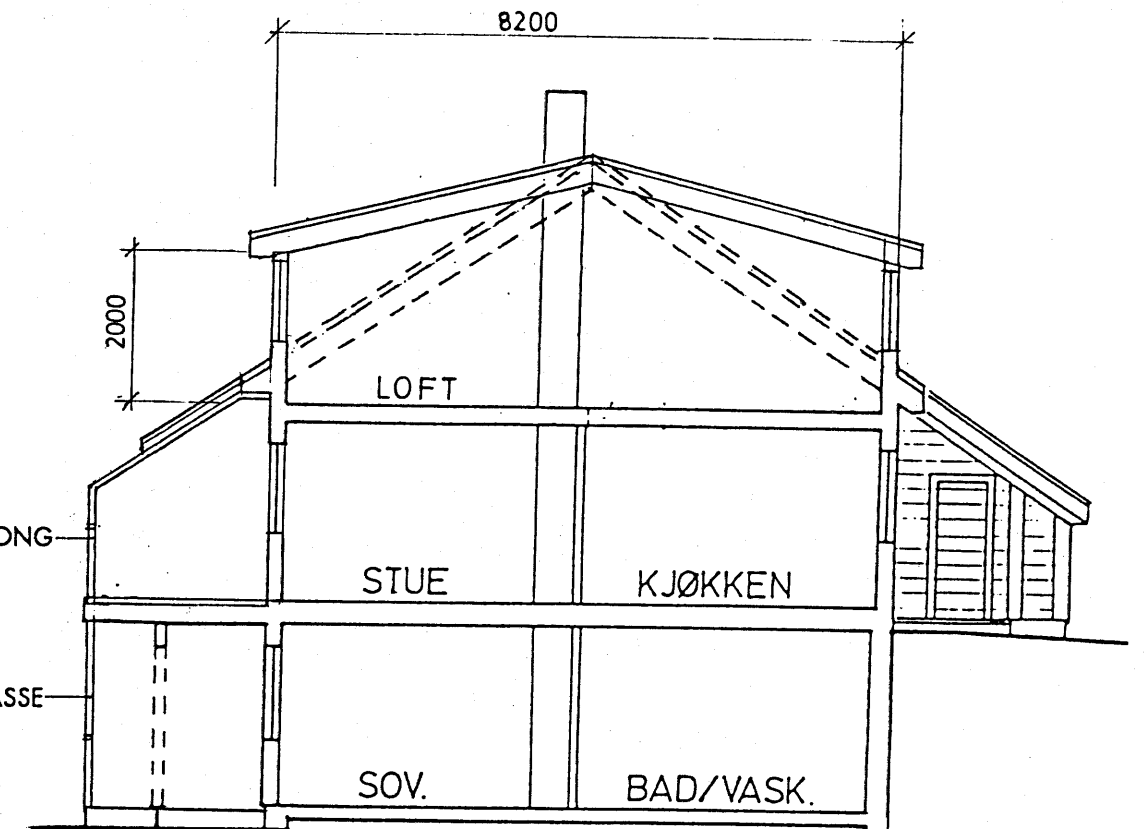
Mål: 1:100



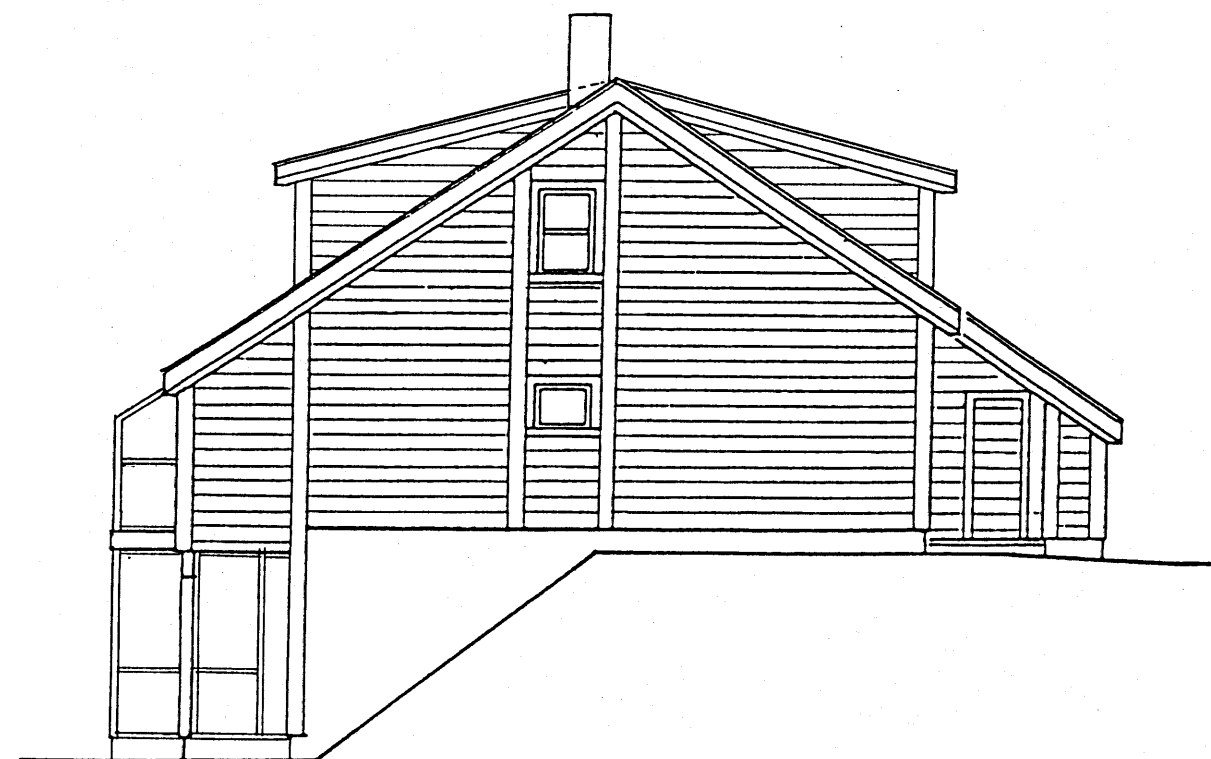
GAVLFASADE NORD

INNGLOSSING AV BALKONG
SKYVBART TAK/FRONT

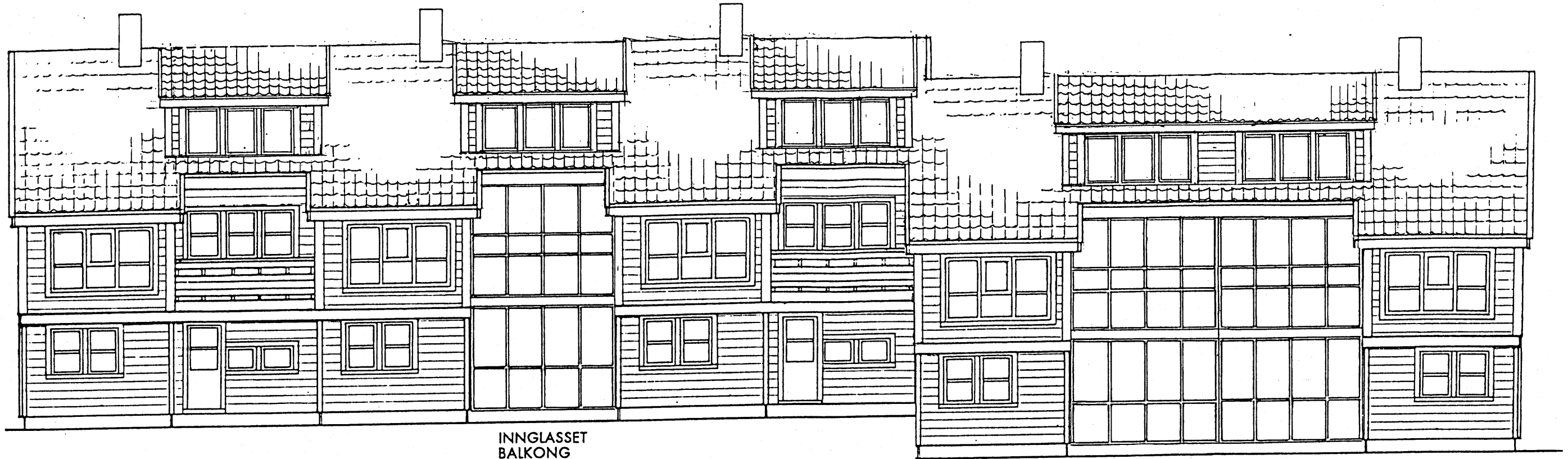
INNGLOSSING AV TERRASSE
SKYVBAR FRONT



SNITT



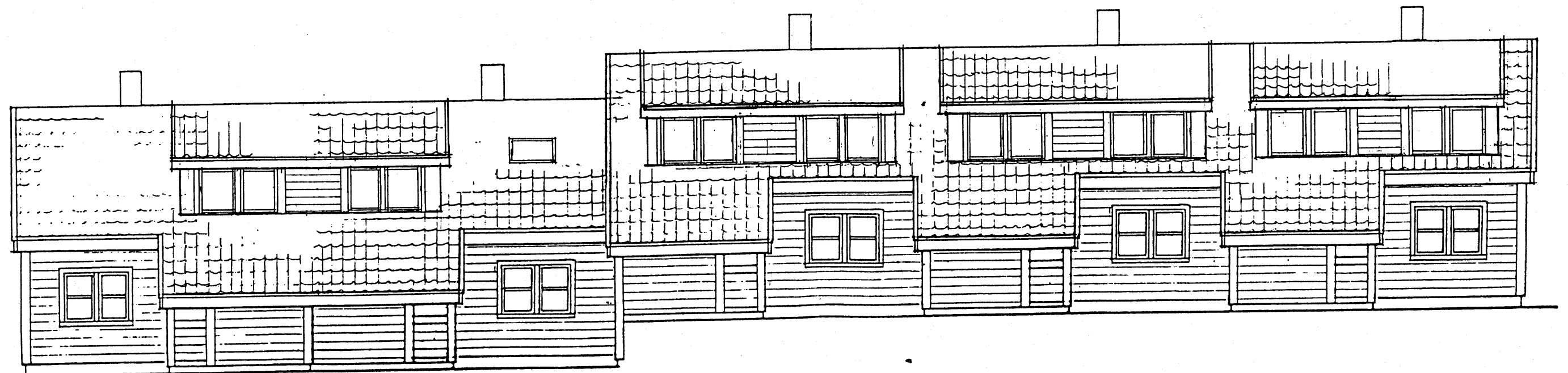
GAVLFASADE SYD



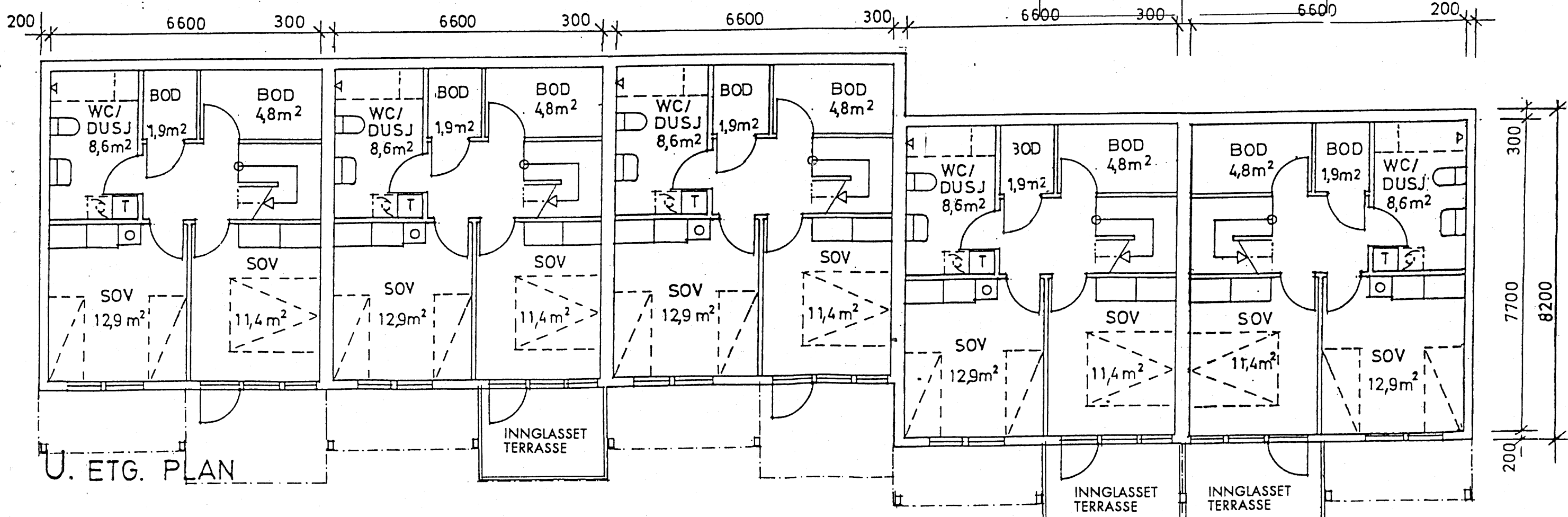
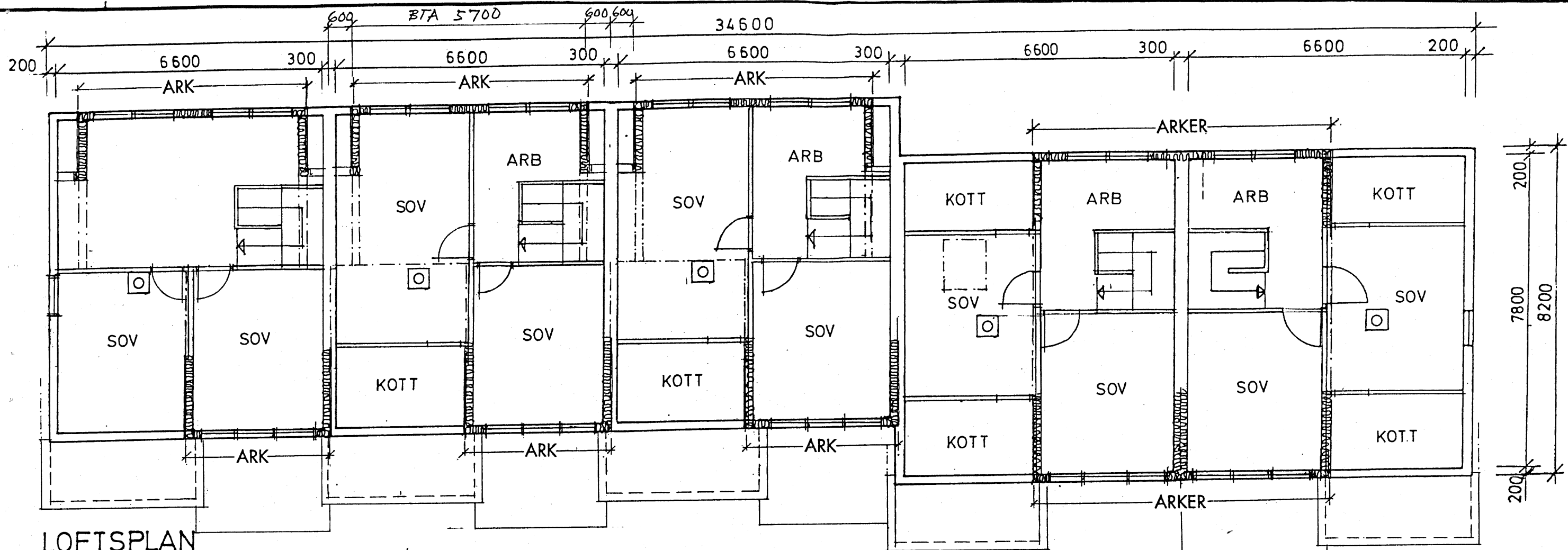
FASADE VEST

INGLASSET
BALKONG
TERRASSE

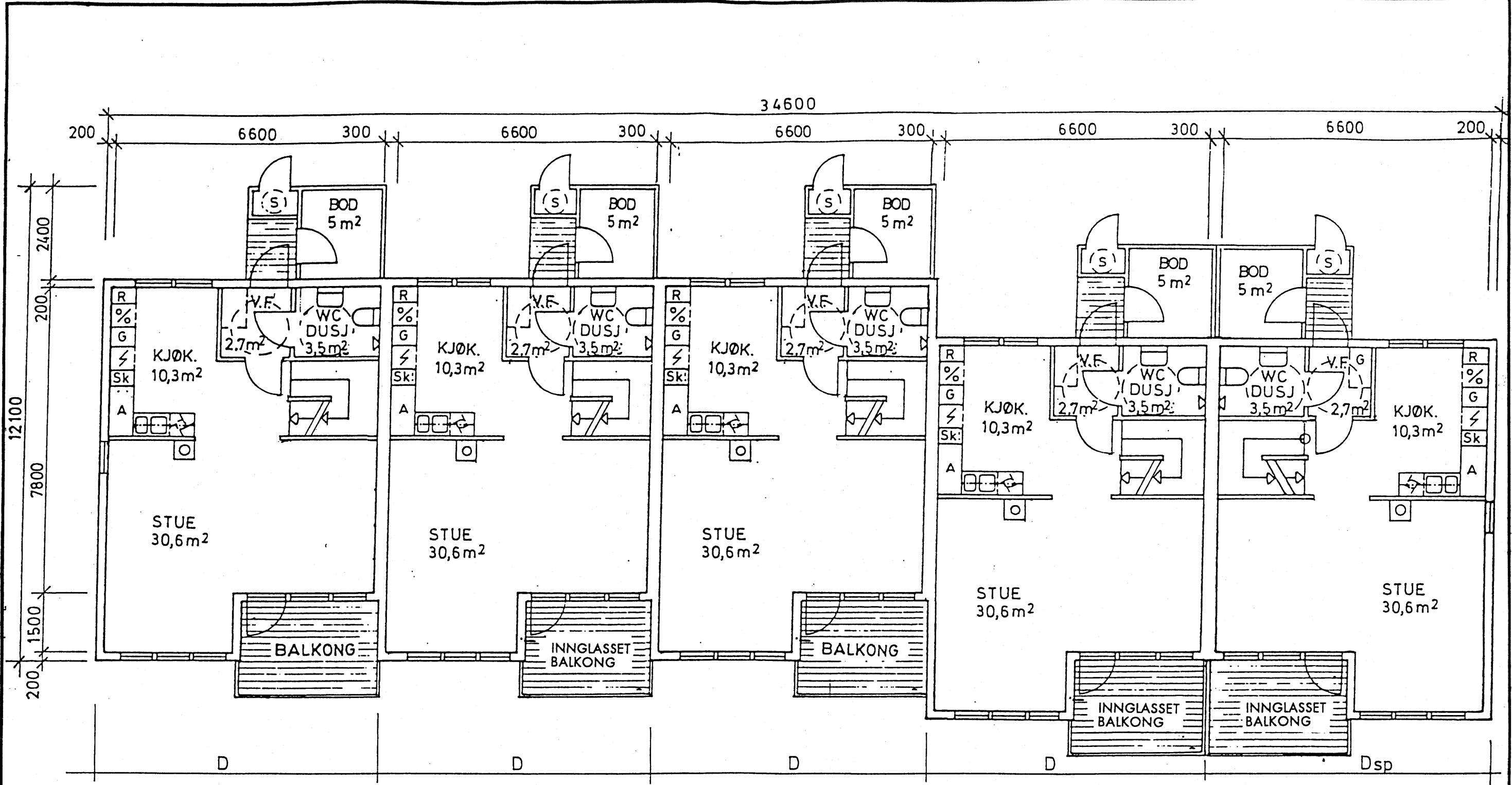
INGLASSET
BALKONG
TERRASSE



FASADE ØST



LEILIGHETER **TYPE D**



1. ETG. PLAN

LEILIGHETER **TYPE D**